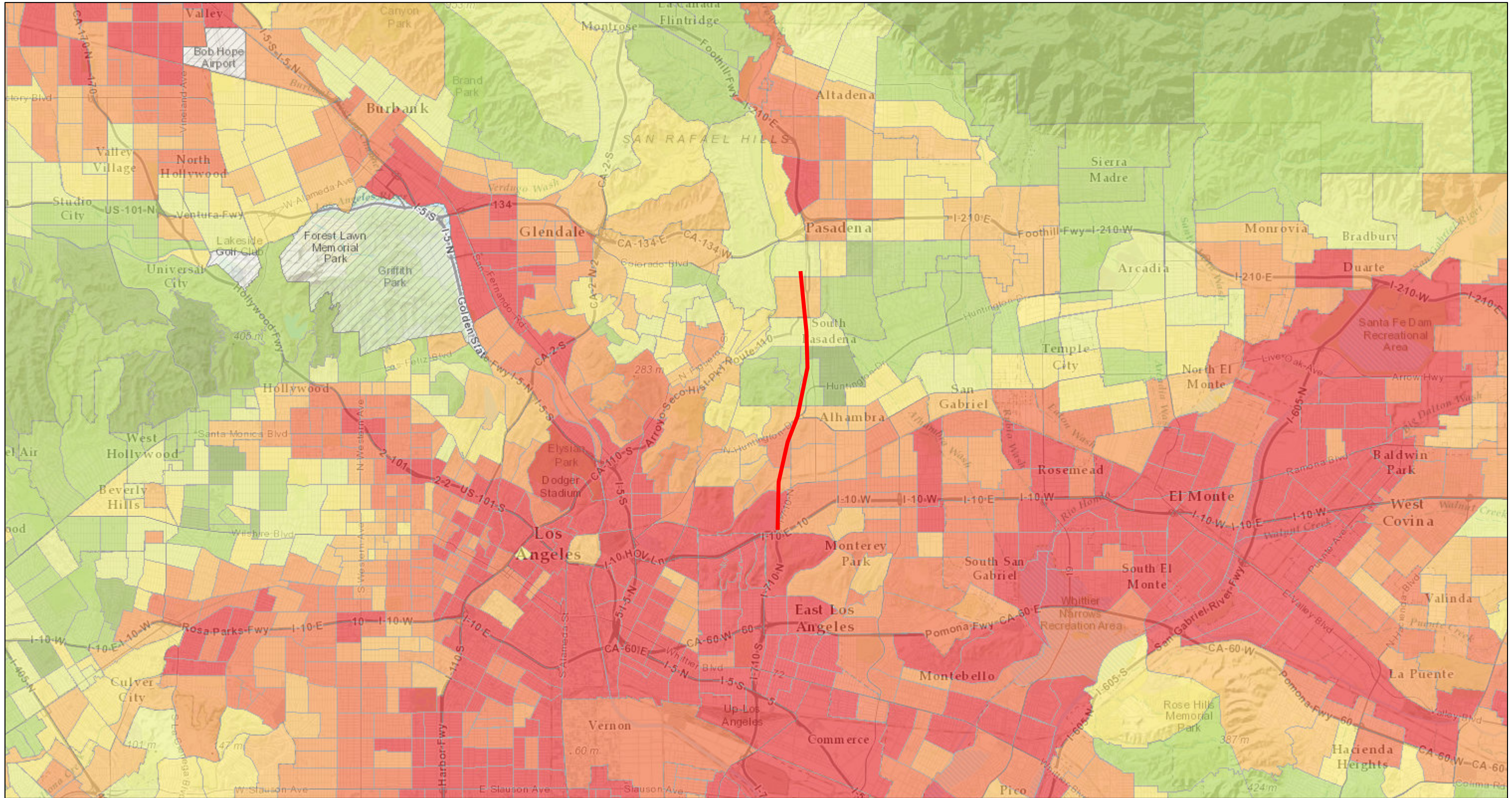


CalEnviroScreen 2.0 with proposed 710 tunnel

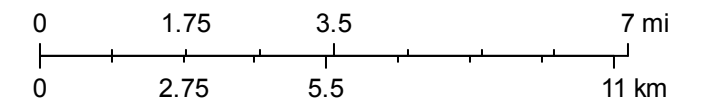
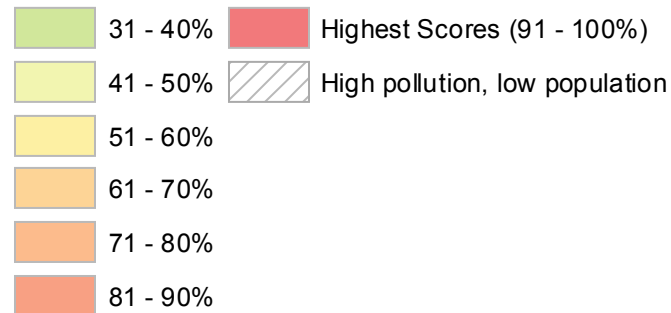


July 22, 2015

1:144,448

Proposed Tunnel - Lines

Line



Sources: Esri, HERE, DeLorme, Intermap, increment P Corp., GEBCO, USGS, FAO, NPS, NRCAN, GeoBase, IGN, Kadaster NL, Ordnance Survey, Esri Japan, METI, Esri China (Hong Kong), swisstopo, MapmyIndia, © OpenStreetMap contributors, and the GIS User Community