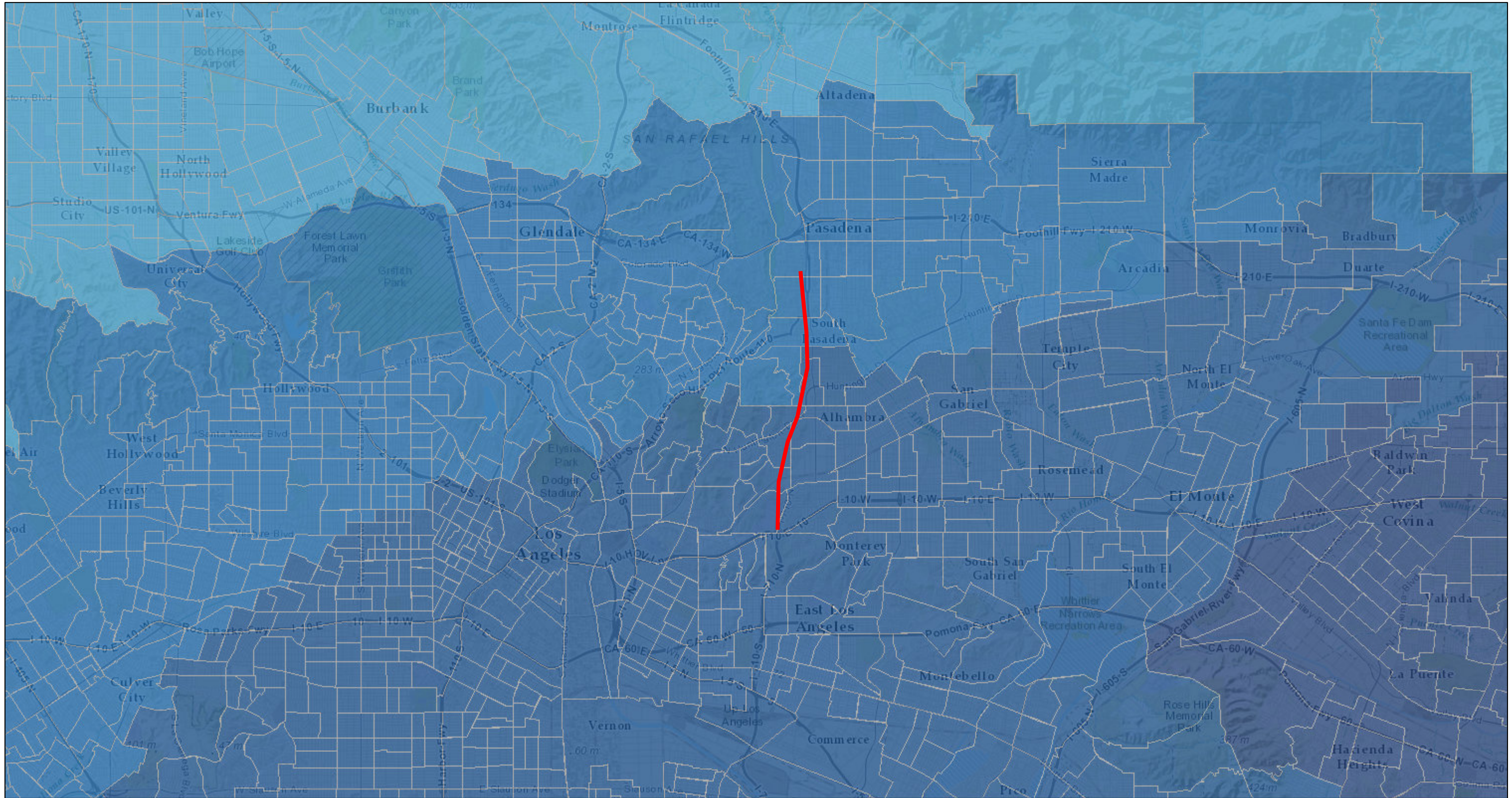


# PM 2.5 with proposed 710 tunnel



July 22, 2015

1:144,448

Proposed Tunnel - Lines

> 90 to 100

Line

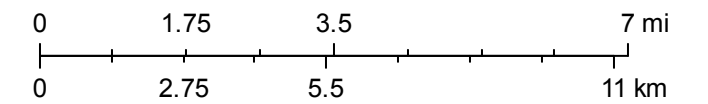
High pollution, low population

CalEnviroScreen 2.0 Results

> 60 to 70

> 70 to 80

> 80 to 90



Sources: Esri, HERE, DeLorme, Intermap, increment P Corp., GEBCO, USGS, FAO, NPS, NRCAN, GeoBase, IGN, Kadaster NL, Ordnance Survey, Esri Japan, METI, Esri China (Hong Kong), swisstopo, MapmyIndia, © OpenStreetMap contributors, and the GIS User Community